

# HPL ..3

## POMPE E MOTORI AD INGRANAGGI GEAR PUMPS AND MOTORS ZAHNRADPUMPEN UND -MOTOREN

### HPL PA3

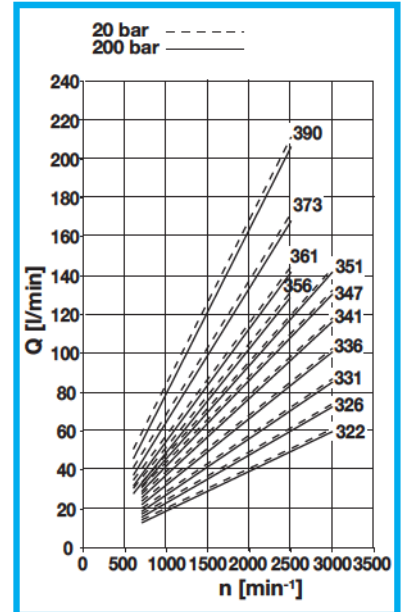
#### POMPE AD INGRANAGGI GEAR PUMPS ZAHNRADPUMPEN

#### DATI TECNICI TECHNICAL DATA TECHNISCHE MERKMALE



#### DIAGRAMMA PORTATE DIAGRAMS KENNLINIEN

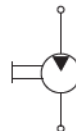
GRUPPO GROUP BAUREIHE	TIPO TYPE TYP	CILINDRATA TEORICA NOMINAL DISPLACEMENT FÖRDERVOLUMEN (TM)		CONTINUA CONTINUOUS DAUER		PRESSIONE PRESSURE DRUCK		PICCO PEAK SPITZEN	VELOCITÀ DI ROTAZIONE SPEED DREHZAHL		MASSA WEIGHT GEWICHT		
		cm <sup>3</sup>	in <sup>3</sup>	bar	psi	bar	psi		bar	psi	MAX	MIN	kg
										min <sup>-1</sup>	min <sup>-1</sup>		
3	22	21,50	1,31	220	3191	250	3626	310	4496	3000	700	6,20	13,67
	26	26,00	1,59	210	3046	250	3626	300	4351			6,20	13,67
	31	30,50	1,86	210	3046	250	3626	280	4061			6,20	13,67
	36	36,00	2,20	210	3046	250	3626	280	4061			6,50	14,33
	41	41,50	2,53	210	3046	250	3626	280	4061			7,20	15,87
	47	46,50	2,84	180	2611	210	3046	270	3916			7,20	15,87
	51	50,50	3,08	180	2611	210	3046	270	3916	7,20	15,87		
	56	56,00	3,42	170	2466	200	2901	230	3336	7,40	16,31		
	61	61,00	3,72	150	2176	180	2611	200	2901	7,60	16,76		
	73	72,50	4,42	140	2031	150	2176	180	2611	8,00	17,64		
90	89,00	5,43	110	1595	120	1740	170	2466	8,60	18,96			



### HPL MA3

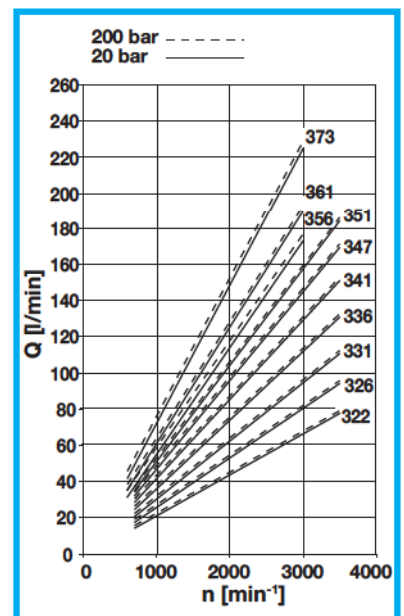
#### MOTORI AD INGRANAGGI GEAR MOTORS ZAHNRADMOTOREN

#### DATI TECNICI TECHNICAL DATA TECHNISCHE MERKMALE



#### DIAGRAMMA PORTATE DIAGRAMS KENNLINIEN

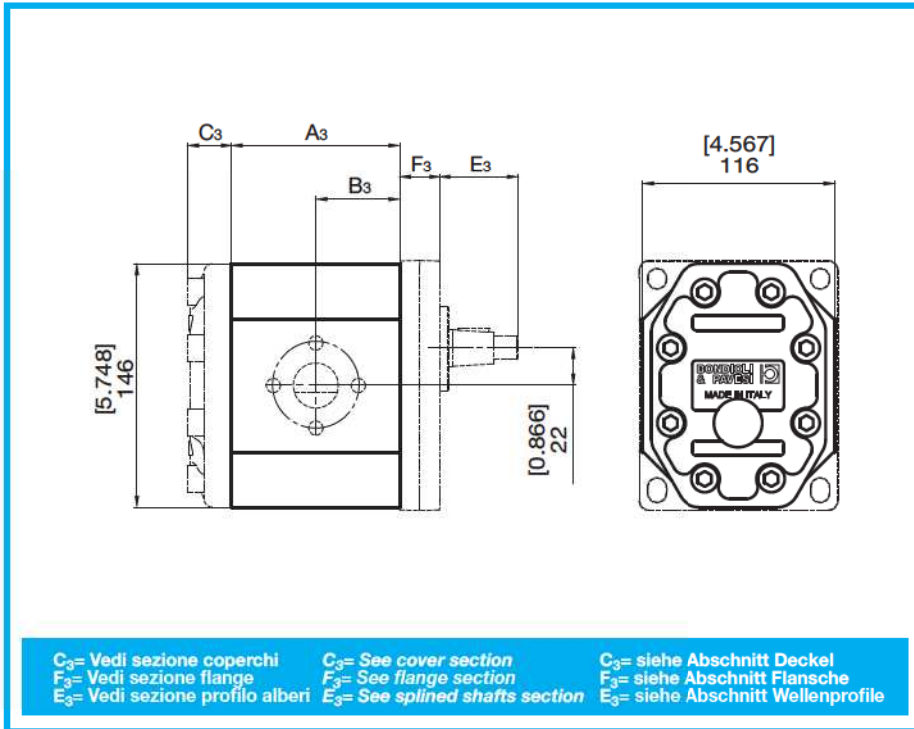
GRUPPO GROUP BAUREIHE	TIPO TYPE TYP	CILINDRATA TEORICA NOMINAL DISPLACEMENT FÖRDERVOLUMEN (TM)		CONTINUA CONTINUOUS DAUER		PRESSIONE PRESSURE DRUCK		PICCO PEAK SPITZEN	VELOCITÀ DI ROTAZIONE SPEED DREHZAHL		MASSA WEIGHT GEWICHT		
		cm <sup>3</sup>	in <sup>3</sup>	bar	psi	bar	psi		bar	psi	MAX	MIN	kg
										min <sup>-1</sup>	min <sup>-1</sup>		
3	22	21,50	1,31	220	3191	250	3626	310	4496	3500	700	6,20	13,67
	26	26,00	1,59	210	3046	250	3626	300	4351			6,20	13,67
	31	30,50	1,86	210	3046	250	3626	280	4061			6,20	13,67
	36	36,00	2,20	210	3046	250	3626	280	4061			6,50	14,33
	41	41,50	2,53	210	3046	250	3626	280	4061			7,20	15,87
	47	46,50	2,84	180	2611	210	3046	270	3916			7,20	15,87
	51	50,50	3,08	180	2611	210	3046	270	3916	7,20	15,87		
	56	56,00	3,42	170	2466	200	2901	230	3336	7,40	16,31		
	61	61,00	3,72	150	2176	180	2611	200	2901	7,60	16,76		
	73	72,50	4,42	140	2031	150	2176	180	2611	8,00	17,64		





**DIMENSIONI  
SIZE  
ABMESSUNGEN**

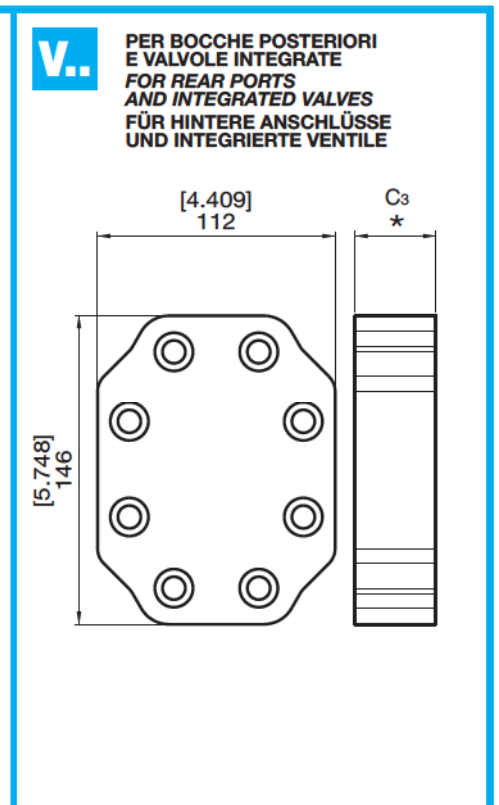
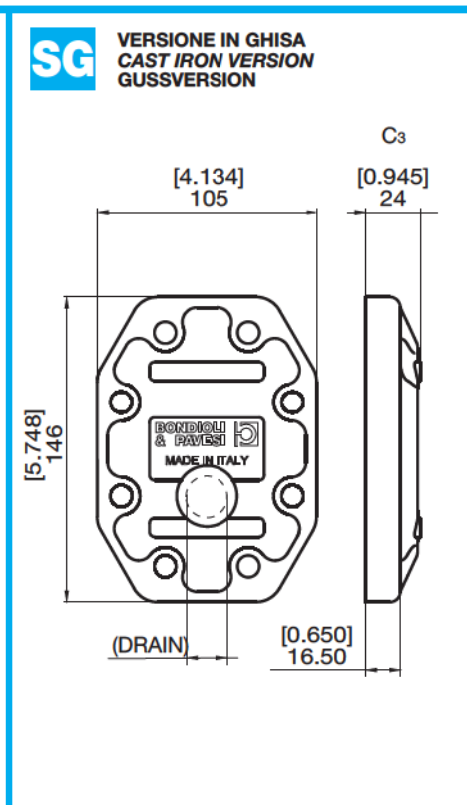
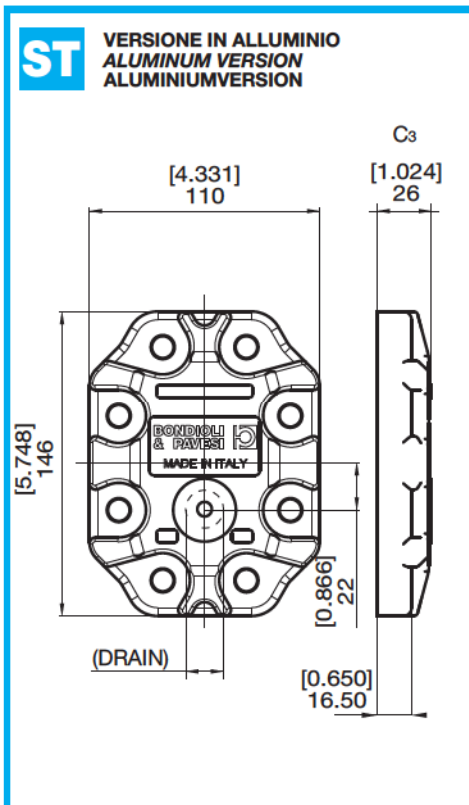
**HPL..3**



**DIAGRAMMA PORTATE  
DIAGRAMS  
KENNLIINIEN**

GRUPPO GROUP BAUREIHE	TIPO TYPE TYP	A <sub>3</sub>		B <sub>3</sub>	
		mm	in	mm	in
3	22	81,07	3,192	40,5	1,594
	26	84,07	3,310	42,0	1,654
	31	87,07	3,428	43,5	1,714
	36	91,07	3,585	45,5	1,793
	41	95,07	3,743	47,5	1,870
	47	98,07	3,861	49,0	1,929
	51	101,07	3,979	50,5	1,990
	56	104,57	4,117	52,3	2,059
	61	108,57	4,274	54,3	2,137
	73	116,07	4,570	58,0	2,285
90	127,07	5,003	63,5	2,501	

**COPERCHI  
COVERS  
DECKEL**



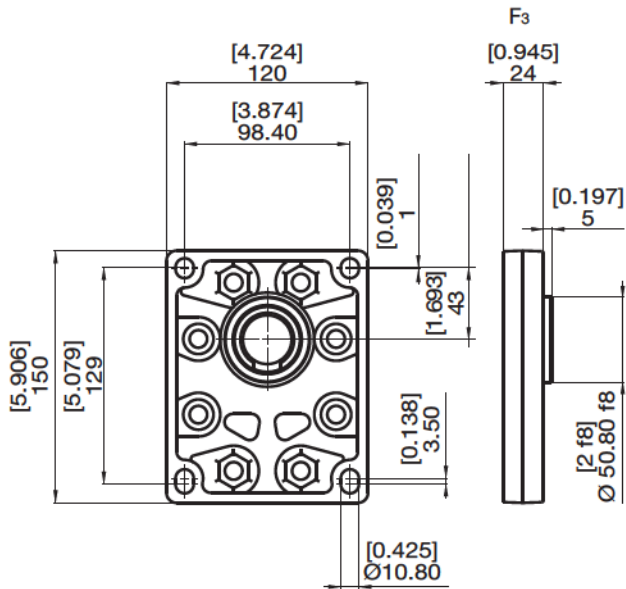
FLANGE  
FLANGES  
FLANSCH

VERSIONE IN ALLUMINIO  
ALUMINUM VERSION  
ALUMINIUMVERSION

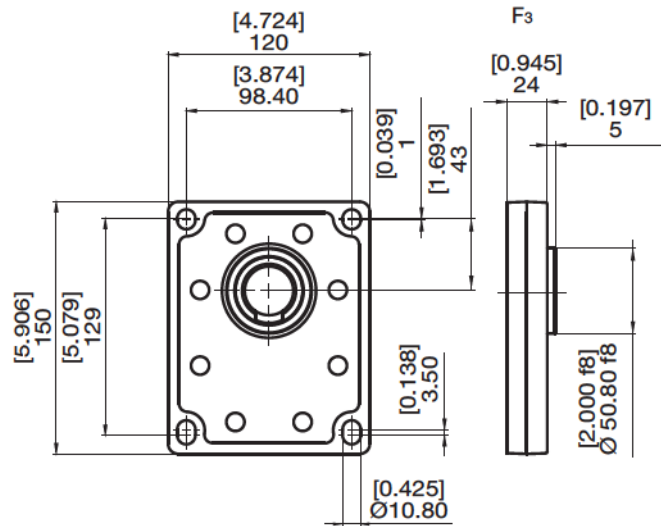
VERSIONE IN GHISA  
CAST IRON VERSION  
GUSSVERSION

HPL..3

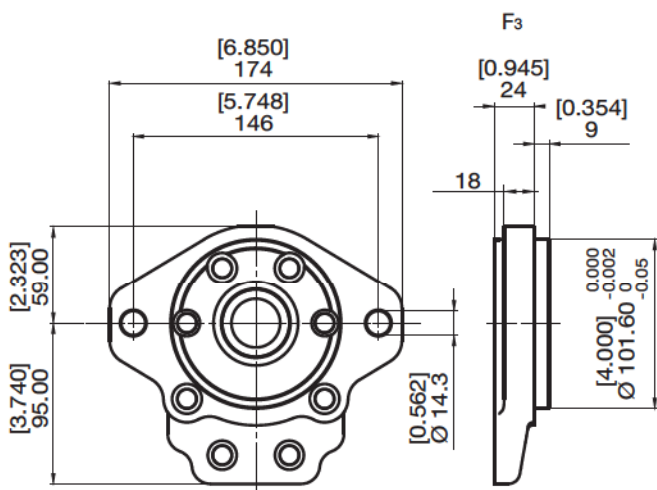
W



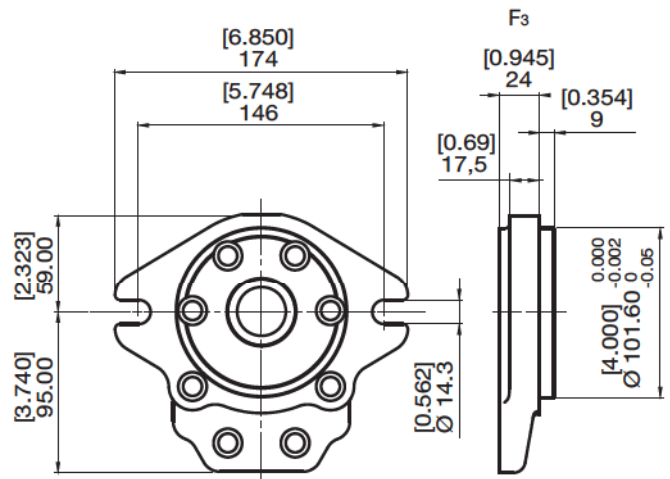
Y



Z



K



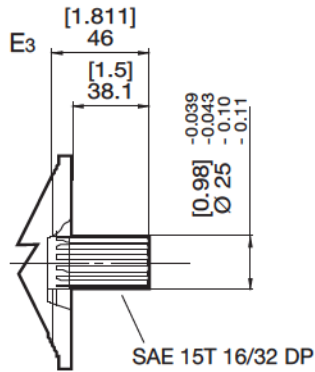


**PROFILO ALBERI  
SPLINE SHAFTS  
WELLENPROFILE**

**HPL..3**

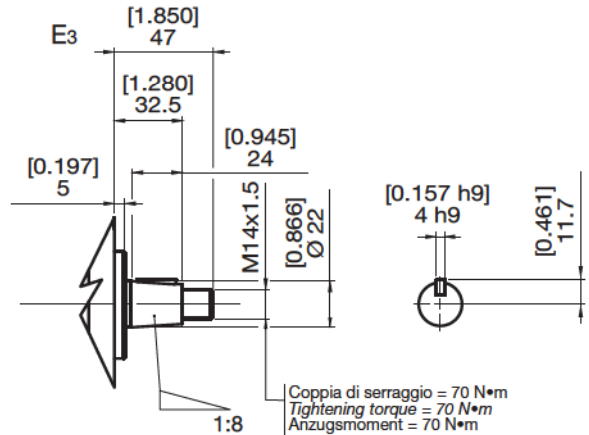
**1**

**COPPIA MAX  
MAX TORQUE  
MAX DREHMOMENT** 460 N•m



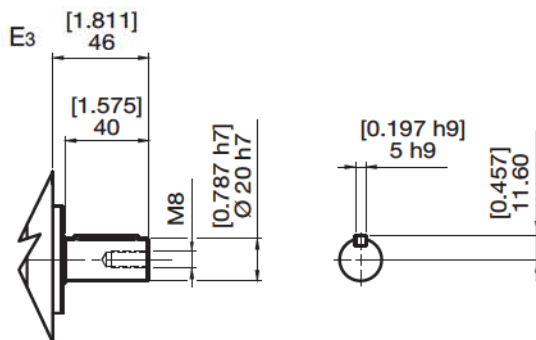
**2**

**COPPIA MAX  
MAX TORQUE  
MAX DREHMOMENT** 240 N•m



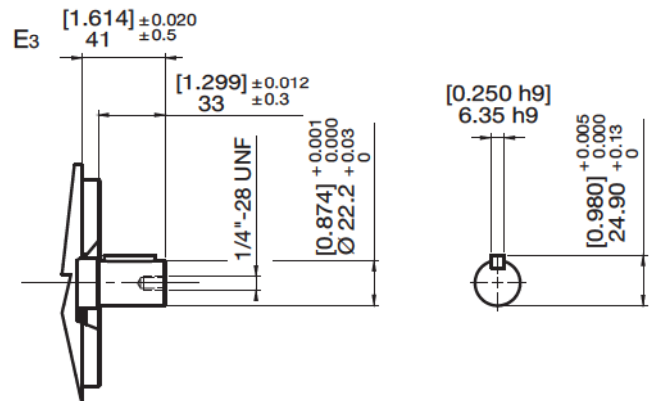
**4**

**COPPIA MAX  
MAX TORQUE  
MAX DREHMOMENT** 190 N•m



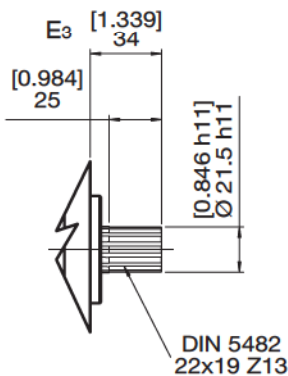
**6**

**COPPIA MAX  
MAX TORQUE  
MAX DREHMOMENT** 210 N•m



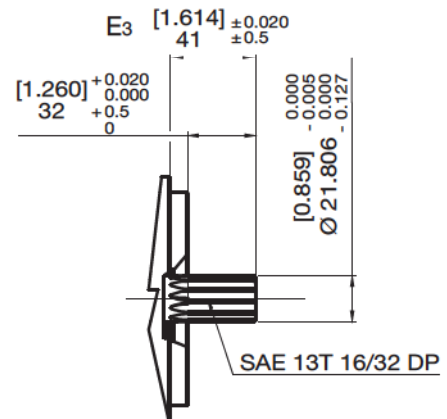
**7**

**COPPIA MAX  
MAX TORQUE  
MAX DREHMOMENT** 250 N•m



**9**

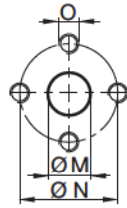
**COPPIA MAX  
MAX TORQUE  
MAX DREHMOMENT** 310 N•m



**BOCCHIE  
PORTS  
ANSCHLÜSSE**

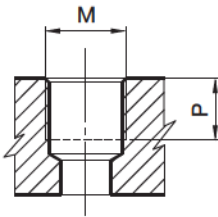
**HPL..3**

**E** LATERALE  
LATERAL  
SEITLICH



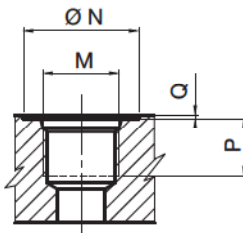
TIPO TYPE TYP	M		N		O	
	mm	in	mm	in		Nm
E5	20	0,79	40	1,57	M8	15
E7	27	1,06	51	2,01	M10	30
E8	34	1,34	62	2,44	M10	30

**G** LATERALE  
LATERAL  
SEITLICH



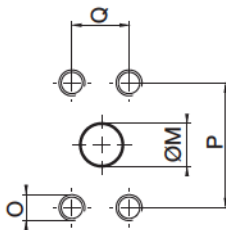
TIPO TYPE TYP	M		P	
		Nm	mm	in
*G3	3/8" GAS BSPP	38	12	0,47
G6	3/4" GAS BSPP	90	19	0,75
G7	1" GAS BSPP	130	21	0,83
G8	1 1/4" GAS BSPP	70	21	0,83

**U** LATERALE  
LATERAL  
SEITLICH



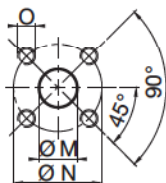
TIPO TYPE TYP	DIMENSIONE SIZE GRÖSSE	N		P		Q		M	
		mm	in	mm	in	mm	in		Nm
U6	3/4"	41	1,61	20	0,79	0,3	0,01	1-1/16"-12 UNF	90
U7	1"	49	1,93	20	0,79	0,3	0,01	1-5/16"-12 UNF	130
U8	1 1/4"	58	2,28	20	0,79	0,3	0,01	1-5/8"-12 UNF	70

**N** LATERALE  
LATERAL  
SEITLICH



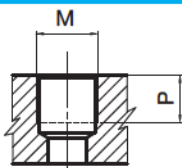
TIPO TYPE TYP	DIMENSIONE SIZE GRÖSSE	M		P		Q		O	
		mm	in	mm	in	mm	in		Nm
N6	3/4"	20	0,79	47,6	1,87	22,2	0,87	3/8"-16UNC-2B	25
N7	1"	27	1,06	52,4	2,60	26,2	1,03	3/8"-16UNC-2B	30
N8	1 1/4"	34	1,34	58,7	2,31	30,2	1,19	7/16"-14UNC-2B	45

**X** LATERALE  
LATERAL  
SEITLICH



TIPO TYPE TYP	M		N		O	
	mm	in	mm	in		Nm
X7	19	0,75	55	2,17	M8	15
X8	27	1,06	55	2,17	M8	15

**M**



TIPO TYPE TYP	M		P	
		Nm	mm	in
*M3	M16x1,5	35	12	0,47

\* Drenaggio

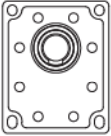
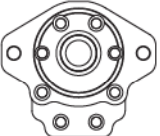
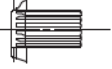
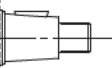





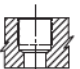



\* Drain Port

\* Lecköl



**COMBINAZIONI  
COMBINATIONS  
KOMBINATIONEN**

**HPL..3**

ESTREMITÀ ALBERO SHAFT PROFIL WELLENENDE	FLANGE FLANGE FLANSCH	
	W Y 	Z K 
<b>1</b> 		<input checked="" type="checkbox"/>
<b>2</b> 	<input checked="" type="checkbox"/>	
<b>4</b> 	<input checked="" type="checkbox"/>	
<b>6</b> 		<input checked="" type="checkbox"/>
<b>7</b> 	<input checked="" type="checkbox"/>	
<b>9</b> 		<input checked="" type="checkbox"/>
<b>BOCCHIE PORTS ANSCHLÜSSE</b>		
<b>E</b> 	<input checked="" type="checkbox"/>	
<b>G</b> 	<input checked="" type="checkbox"/>	<input checked="" type="checkbox"/>
<b>U</b> 		<input checked="" type="checkbox"/>
<b>N</b> 		<input checked="" type="checkbox"/>
<b>X</b> 	<input checked="" type="checkbox"/>	

Questa pagina è intenzionalmente bianca  
*This page is intentionally blank*  
Diese Seite ist bewusst frei gelassen



**ISTRUZIONI PER L'ORDINAZIONE**  
**ORDERING INSTRUCTIONS**  
**BESTELLANLEITUNG**

**HPL..3**

**HPL PA 3 36 D W 2 E7 E5 B ST ..**

**SERIE**  
**SERIES**  
**SERIE**

**PRODOTTO**  
**PRODUCT**  
**PRODUKT**

**MA** - Motore  
**PA** - Pompa singola  
**PT** - Pompa predisposta

**MA** - Motor  
**PA** - Pump  
**PT** - Adapted Pump

**MA** - Motor  
**PA** - Pumpe  
**PT** - Vorbereitete Pumpe

**GRUPPO**  
**GROUP**  
**BAUGRÖSSE**

**3**

**CILINDRATA**  
**DISPLACEMENT**  
**FÖRDERVOLUMEN**

22 - 21,50  
26 - 26,00  
31 - 30,50  
36 - 36,00  
41 - 41,50  
47 - 46,50  
51 - 50,50  
56 - 56,00  
61 - 61,00  
73 - 72,50  
90 - 89,00

**SENSO DI ROTAZIONE**  
**ROTATION**  
**DREHRICHTUNG**

**S** - Antioraria/sinistra  
**D** - Oraria/destra  
**H** - Bidirezionale drenaggio interno  
**B** - Bidirezionale drenaggio esterno posteriore

**S** - Counterclockwise  
**D** - Clockwise  
**H** - Reversible ind drain.  
**B** - Reversible rear. drain. pont.

**S** - Linkslauf  
**D** - Rechtslauf  
**H** - reversibel, Lecköl intern, Anschluß seitlich  
**B** - reversibel, Lecköl extern, Anschluß hinten

**FLANGIA ANTERIORE**  
**FRONT FLANGE**  
**VORDERER FLANSCH**

**W** - Europea D 50,8  
**Z** - SAE B 2 fori  
**Y** - Europea D 50,8 ghisa  
**K** - SAE B 2 fori ghisa

**W** - European D 50,8  
**Z** - SAE B 2 holes  
**Y** - European D 50,8 cast iron  
**K** - SAE B 2 holes cast iron

**W** - EU-Norm D 50,8  
**Z** - SAE B 2 Bohrungen  
**Y** - EU-Norm D 50,8 Guß  
**K** - SAE B 2 Bohrungen Guß

**SET VALVOLE**  
**VALVE SETTING**  
**VENTILEINSTELLUNG**  
(bar)

**COPERCHI - COVERS - DECKEL**

**ST** - Standard  
**SG** - Versione in ghisa  
cast iron version  
Gussversion  
**V..** - Con valvole  
(Vedi sez. valvole)  
With valves  
(See valves section)  
Mit Ventilen  
(siehe Abschnitt Ventile)

**GUARNIZIONI**  
**SEALS**  
**DICHTUNGEN**

**B** - NBR  
**R** - NBR alte pres. (25 bar)  
For high pres. (25 bar)  
Hochdruck (25 bar)  
**V** - Viton  
**W** - Viton alte pres. (25 bar)  
For high pres. (25 bar)  
Hochdruck (25 bar)

**BOCCHIE STD - STANDARD PORT - STANDARD ANSCHLÜSSE**  
**CILINDRATA - DISPLACEMENT - FÖRDER-/SCHLUCKVOLUMEN**

22.....31	36.....61	73.....90	
Pompe - Pumps - Pumpen IN/OUT	Pompe - Pumps - Pumpen IN/OUT	Pompe - Pumps - Pumpen IN/OUT	DRAIN
<b>E5 E5</b>	<b>E7 E5</b>	<b>E8 E7</b>	<b>M3</b>
<b>G6 G6</b>	<b>G7 G6</b>	<b>G8 G7</b>	<b>G3</b>
<b>U7 U6</b>	<b>U8 U7</b>	<b>U8 U7</b>	<b>M3</b>
<b>N7 N6</b>	<b>N7 N6</b>	<b>N8 N7</b>	<b>M3</b>
<b>X8 X7</b>	<b>X8 X7</b>	<b>X8 X7</b>	<b>M3</b>

**MOTORI - MOTORS - MOTOREN OUT/IN**  
**MOTORI BIDIR. IN=OUT - REVERS. MOTORS IN=OUT -**  
**BIDIREK.MOTOREN IN=OUT**

**ESTREMITÀ D'ALBERO**  
**SHAFT PROFIL**  
**WELLENENDE**

1 - Scanalato SAE "BB" 15T  
2 - Conico (1:8)  
4 - Cilindrico europeo  
6 - Cilindrico SAE "B"  
7 - Scanalato DIN 5482  
9 - Scanalato SAE "B" 13T

1 - SAE "BB" 15T splined  
2 - Tapered (1:8)  
4 - European parallel shaft  
6 - SAE "B" parallel shaft  
7 - DIN 5482 splined  
9 - SAE "B" 13T splined

1 - Keiwelle SAE "BB" 15T  
2 - Kegel (1:8)  
4 - Kegel EU-Norm  
6 - zylindrisch SAE "B"  
7 - Keilwelle DIN 5482  
9 - Keilwelle SAE "B" 13T